

# Informed learning through social living labs: An innovative approach to information literacy for changing work contexts



Hilary Hughes  
Michael Dezuanni, Marcus Foth, Kerry Mallan  
Queensland University of Technology, Australia  
h.hughes@qut.edu.au

## Thematic overview



- Changing workplace – work contexts
- Digital and collaborative capabilities
- Informed learning - framework
- Social living labs - context and process
- In practice: healthcare interprofessional practice
- Questions

# Changing work contexts



- Globalisation - push for innovation
- Big data & artificial intelligence
- Disappearance of routine work - especially low and mid-skilled
- Gig economy - independent contractors, short-term contracts
- Demand for diverse capabilities – including digital literacy
- Flexible, collaborative - multi-disciplinary, multi-cultural contexts

(Baller, Dutta & Lanvin, 2016; Crawford, 2013 ; Mason, Fleming, Paxton & Singh, 2017; OECD, 2016)

# Learning needs for contemporary work contexts



- Education pressure - uncertain future
- Traditional PD - 'empty compliance' (Calvert, 2016)

Alternative - informed learning through social living labs

# What is informed learning?



- Experiential, reflective approach to information literacy (Bruce 2018)
- *Using information to learn* – education, community **and** workplace (Bruce & Hughes, 2010; Bruce, Hughes & Somerville, 2013)
- *Information* - anything that informs in a particular context
- *Learning* - expanding awareness through experiencing aspects of the world in different ways (Marton & Booth, 1997)
- Contextualised - relevant to learners' interests and needs

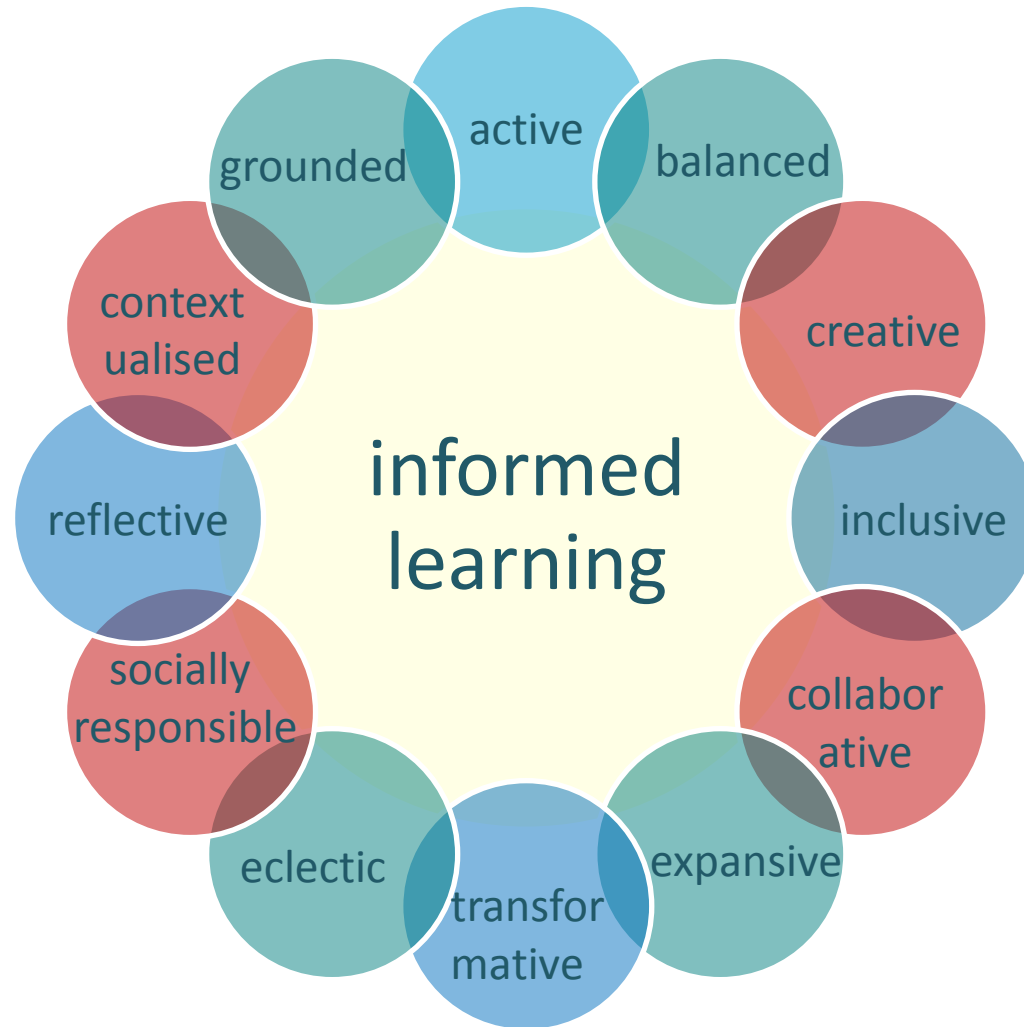
# Principles of informed learning



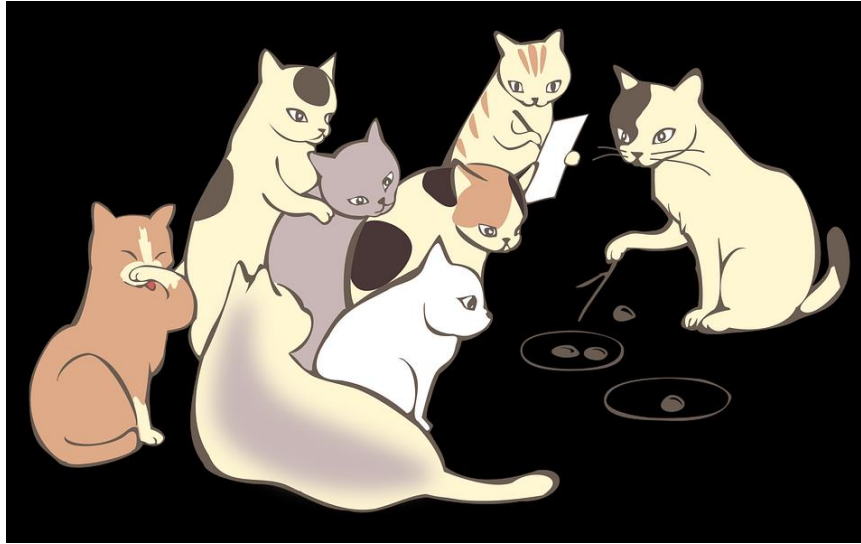
Informed learning:

1. Takes into account *learners' experiences* of information use **and** learning
2. Promotes *simultaneous learning* about information use **and** a particular topic
3. Brings about *changes* in learners' experience of information use **and** understanding of the topic

# Characteristics of informed learning



# Living labs: Emerging approach for community participation



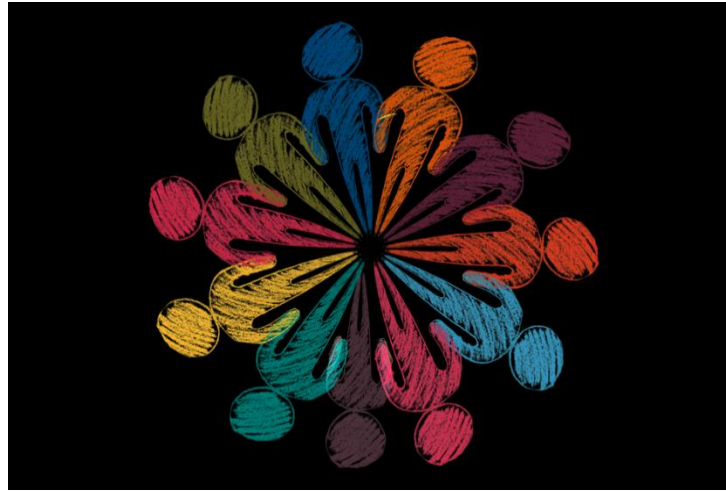
*User-centred, open innovation eco-systems based on a systematic user co-creation approach integrating research and innovation processes in real life settings.*

(Garcia Robles, Hirvikoski, Schuurman and Stokes, 2015, p. 13)

exploration ~ experimentation ~ co-creation ~ evaluation



# What is a social living lab?



- Community-based – participatory process
- Problem-solving and co-design
- Everyday problems - participatory do-it-yourself environment  
(Franz & Ballon, 2015)
- Non-hierarchical – values local knowledge

# The FDP project: Fostering digital participation through social Living Labs



- ARC-funded research
- Regional and rural Australia: Toowoomba, Townsville
- Develop digital confidence and skills
- Partnership SLQ & regional libraries

<https://research.qut.edu.au/fdpp>

East Creek Community Centre  
Pittsworth Stories  
Storyelling  
Mixhaus  
Cool clips  
Literacy tutors for migrant workers  
Food Rescue Townsville

# FDP social living labs



Storytelling (young adults) Toowoomba



Mixhaus (community makerspace) Townsville

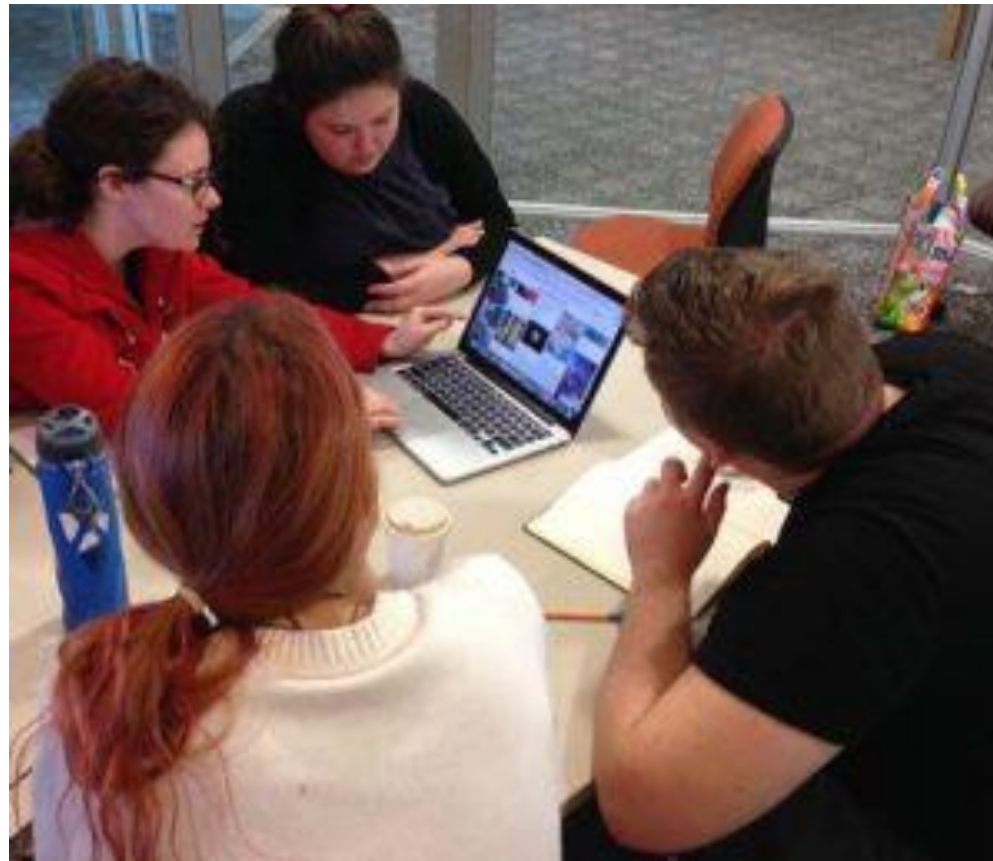


Home tutors (for migrant workers) Oakey

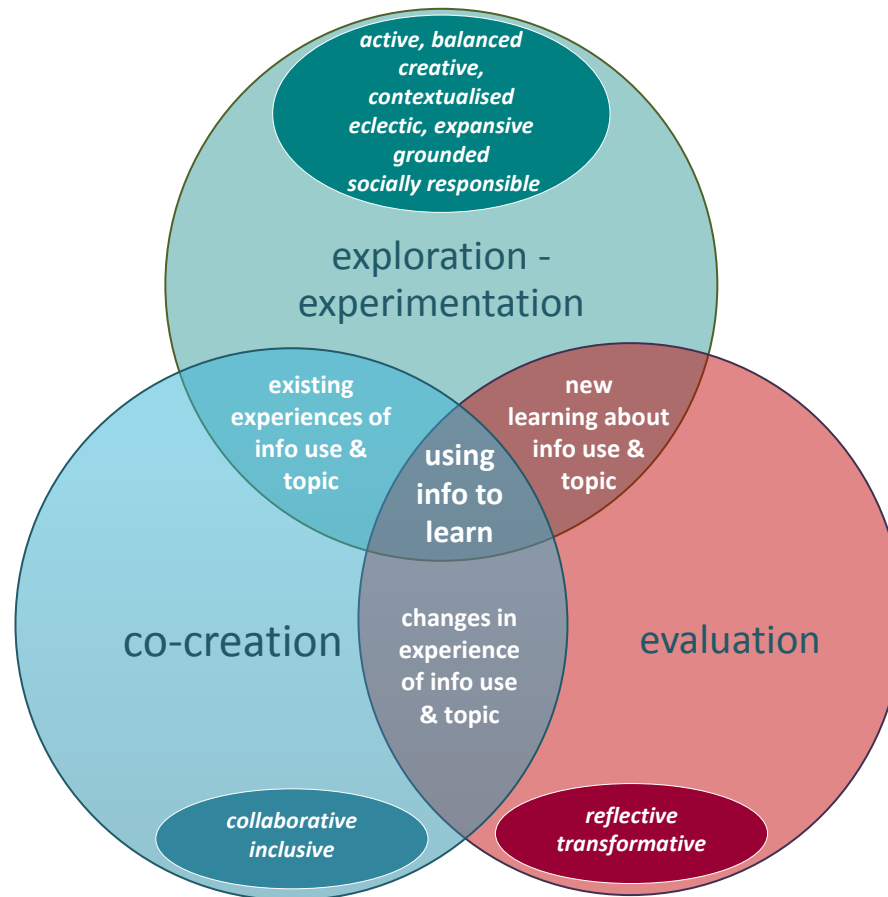


Cool clips (school students) Townsville

# Informed learning + Social living labs for changing work contexts



# Informed learning through social living labs conceptual model



# Informed learning through social living labs in context: healthcare interprofessional learning



## Healthcare - changing work contexts

- Holistic healthcare
- Shared decision-making & health management
- Digital health technologies, e-health records
- Interdisciplinary teams
- Medical knowledge, collaboration, cultural fluency, reflection
- Health information and digital literacy
- Interprofessional learning

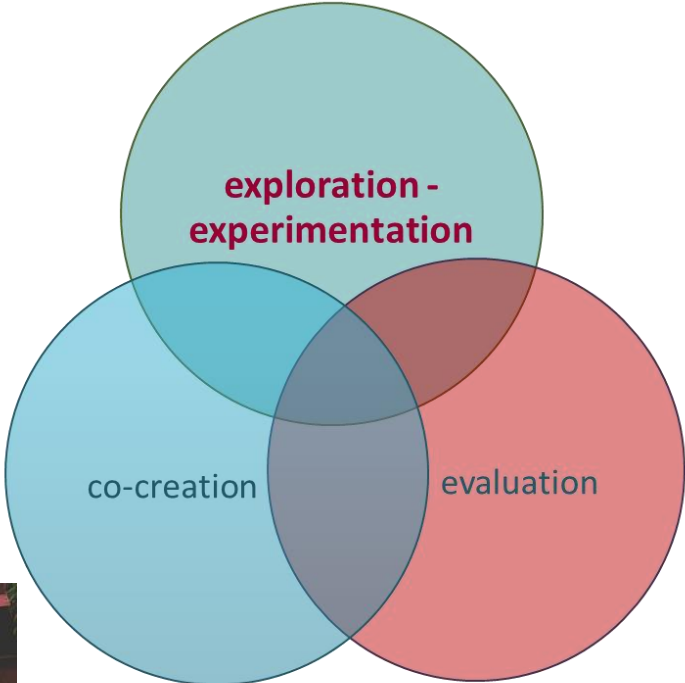
(Barr et al., 2017; Royal College of General Practitioners, 2014; WHO, 2010; Yates et al., 2010)

# Scenario

## GP surgery to smartclinic

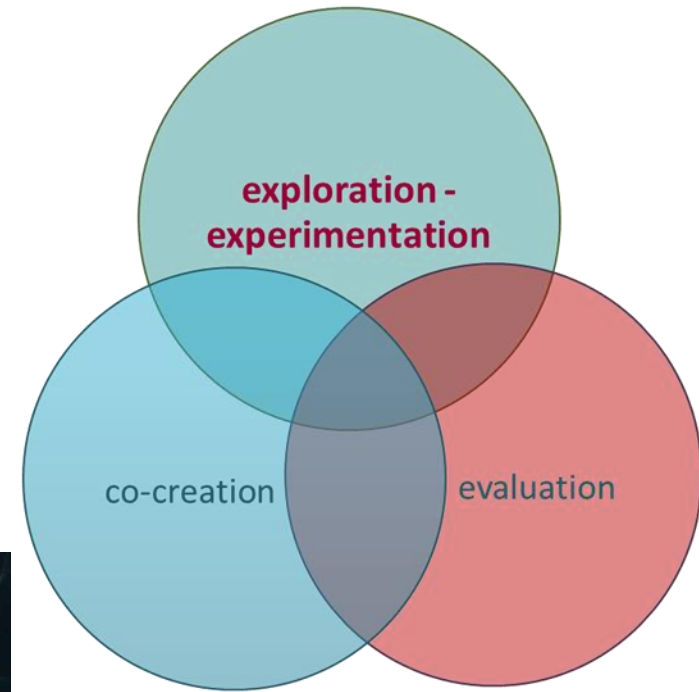


# GP surgery to smartclinic

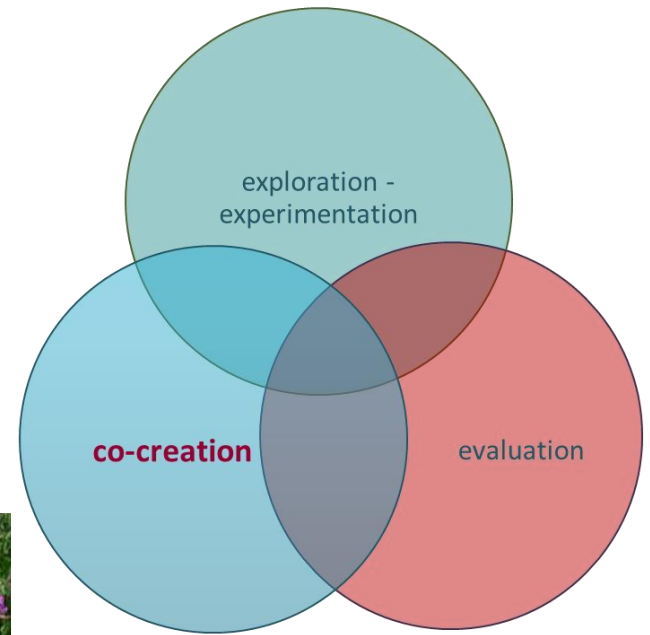




# GP surgery to smartclinic



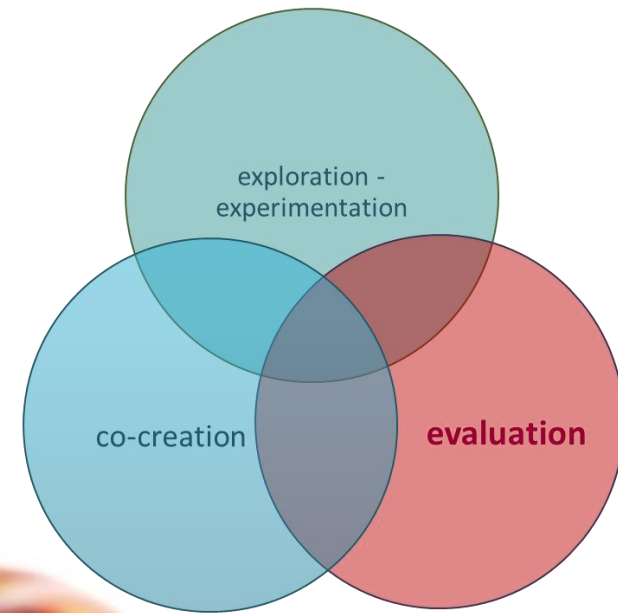
# GP surgery to smartclinic



Congerdesin (2017)

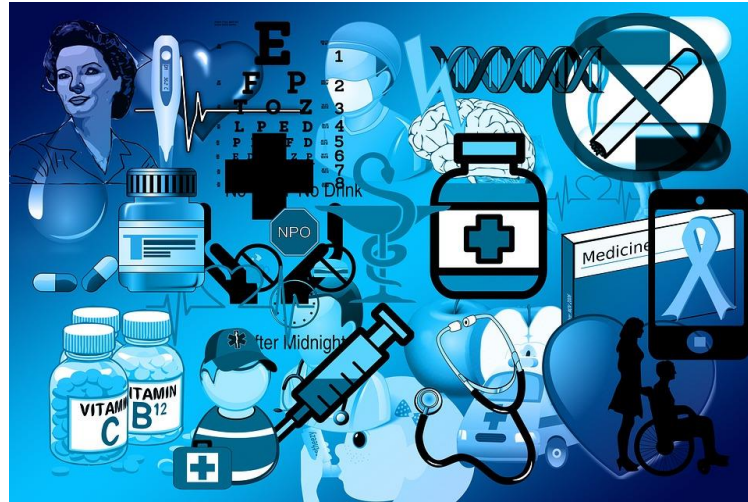
<https://pixabay.com/en/white-cabbage-garden-2521700/>

# GP surgery to smartclinic



# GP surgery to smartclinic

## Social living lab - continuing outcomes



### Informed learning for changing healthcare context

- Raised community awareness of health help - promotion of Smartclinic
- Health knowledge – obesity, nutrition, sustainable gardening
- Community information – demographic profile
- Share resource - research findings
- Digital capabilities & participation – Google +, dropbox, animation
- Informal interprofessional network

# What's different about a social living lab?



- Context **and** process for peer learning
- Critical thinking and creativity - real problem solving
- Digital participation and citizenship
- Personal buy-in and engagement
- Outcomes driven – practical, innovative solutions
- Community of informed learners
- **Open-ended informed learning ecology**

# Thank you! Questions?

Dezuanni, M., Foth, M., Mallan, K. & Hughes, H. eds. (2017).

*Digital Participation through Social Living Labs:*

*Valuing Local Knowledge, Enhancing Engagement.*

Cambridge, UK: Chandos Publishing. ISBN 978-008-102-059-3.



Hilary Hughes, QUT – [h.hughes@qut.edu.au](mailto:h.hughes@qut.edu.au)

# Bibliography

- Baller, S., Dutta, S. & Lanvin, B. (2016). *The global information technology report 2016: Innovating in the digital economy*. Geneva: World Economic Forum. <http://reports.weforum.org/global-information-technology-report-2016/>
- Barr, H., Ford, J., Gray, R., Helme, M., Hutchings, M., Low, H., Machin, A. & Reeves, S. (2017). Interprofessional education guidelines . Centre for the Advancement of Interprofessional Education. <https://www.caipe.org/resources/publications/caipe-2017-interprofessional-education-guidelines-barr-h-ford-j-gray-r-helme-m-hutchings-m-low-h-machin-reeves-s>
- Bruce, C.S. (2008). *Informed learning*. Chicago: ACRL.
- Bruce, C. S. & Hughes, H. (2010). Informed learning: A pedagogical construct attending simultaneously to information use and learning. *Library and Information Science Research*, 32(4), A2-A8.
- Bruce, C. S., Hughes, H., & Somerville, M. M. (2012) Supporting informed learners in the 21st century. *Library Trends*, 60(3), 522-545.
- Bruce, C. S., Somerville, M. M., Stoodley, I. D., & Partridge, H. L. (2013). Diversifying information literacy research: An informed learning perspective. In M. Hepworth & G. Walton (Eds.). *Developing people's information capabilities: fostering information literacy in educational, workplace and community contexts* (pp. 223-240). Bingley, UK: Emerald.
- Calvert, L. (2016). *Moving from compliance to agency: What teachers need to make professional learning work*. Oxford, OH: Learning Forward and NCTAF. <https://learningforward.org/publications/blog/press-releases/2016/03/07/learning-forward-and-professional-learning-maps-announce-partnership>
- Crawford, C. (2013). The challenge of the work environment. In C. Crawford & C. Irving (Eds). *Information literacy and lifelong learning: Policy issues, the workplace, health and public libraries* (pp. 89-120). Oxford: Chandos.
- Franz, Y. (2015). Designing social living labs in urban research. *Info*, 17(4).
- Garcia Robles, A., Hirvikoski, T., Schuurman, D. & Stokes, L. (2016). *Introducing ENoLL and its living lab community*. Brussels: European Network of Living Labs. Retrieved from <https://issuu.com/enoll/docs/enoll-print?e=23453591/33195876>
- Hughes, H. & Bruce, C.S. (2013) International students' experiences of informed learning : a pedagogical case study. *International Journal of Pedagogies and Learning*, 8(2), 106-119
- Hughes, H., Foth, M., Dezuanni, M., Mallan, K. & Allan, C. (2017). Fostering digital participation and communication through social living labs: A qualitative case study from regional Australia. *Communication research and Practice*. <https://eprints.gut.edu.au/103474/>
- Hughes, H., Wolf, R. & Foth, M. (2017 in press). Fostering digital literacies and community participation through a social living lab: The Townsville Food Rescue initiative. *Information and Learning Science*.
- Marton, F. & Booth, S. (1997). *Learning and awareness*.
- Mason, C., Fleming, A., Paxton, G., & Singh, J. (2017). *Lifelong participation through digital technology*. CSIRO. [https://research.csiro.au/lifelong/wp-content/uploads/sites/101/2017/02/16-00818\\_Data61\\_Report\\_40pp\\_LifeLong170213\\_WEB.pdf](https://research.csiro.au/lifelong/wp-content/uploads/sites/101/2017/02/16-00818_Data61_Report_40pp_LifeLong170213_WEB.pdf)
- OECD. (2016). *Skills for a digital world: Policy brief on the future of work*. Paris: OECD. [www.oecd.org/employment/future-of-work.htm](http://www.oecd.org/employment/future-of-work.htm)
- Primary Care Workforce Commission. (2015). *The future of primary care: Creating teams for tomorrow*. Health Education England. [https://www.hee.nhs.uk/sites/default/files/documents/WES\\_The-future-of-primary-care.pdf](https://www.hee.nhs.uk/sites/default/files/documents/WES_The-future-of-primary-care.pdf)
- Schuurman, D., De Marez, L. & Ballon, P. (2015). 'Living labs: A systematic literature review. Paper presented at the ENoLL Research Day. <https://biblio.ugent.be/publication/7026155/file/7026171>
- Royal College of General Practitioners. (2014). *An inquiry into patient centred care in the 21st century: Implications for general practice and primary care*. <http://www.rcgp.org.uk/policy/rcgp-policy-areas/inquiry-into-patient-centred-care-in-the-21st-century.aspx>
- World Health Organisation. (2010). *Framework for action on interprofessional education and collaborative practice*. [http://www.who.int/hrh/resources/framework\\_action/en/](http://www.who.int/hrh/resources/framework_action/en/)
- Yates, C., Stoodley, I. D., Partridge, H.L., Bruce, C.S., Cooper, H., Day, G., & Edwards, S. L. (2012). Exploring health information use by older Australians within everyday life. *Library Trends*, 60(3), pp. 460-478.